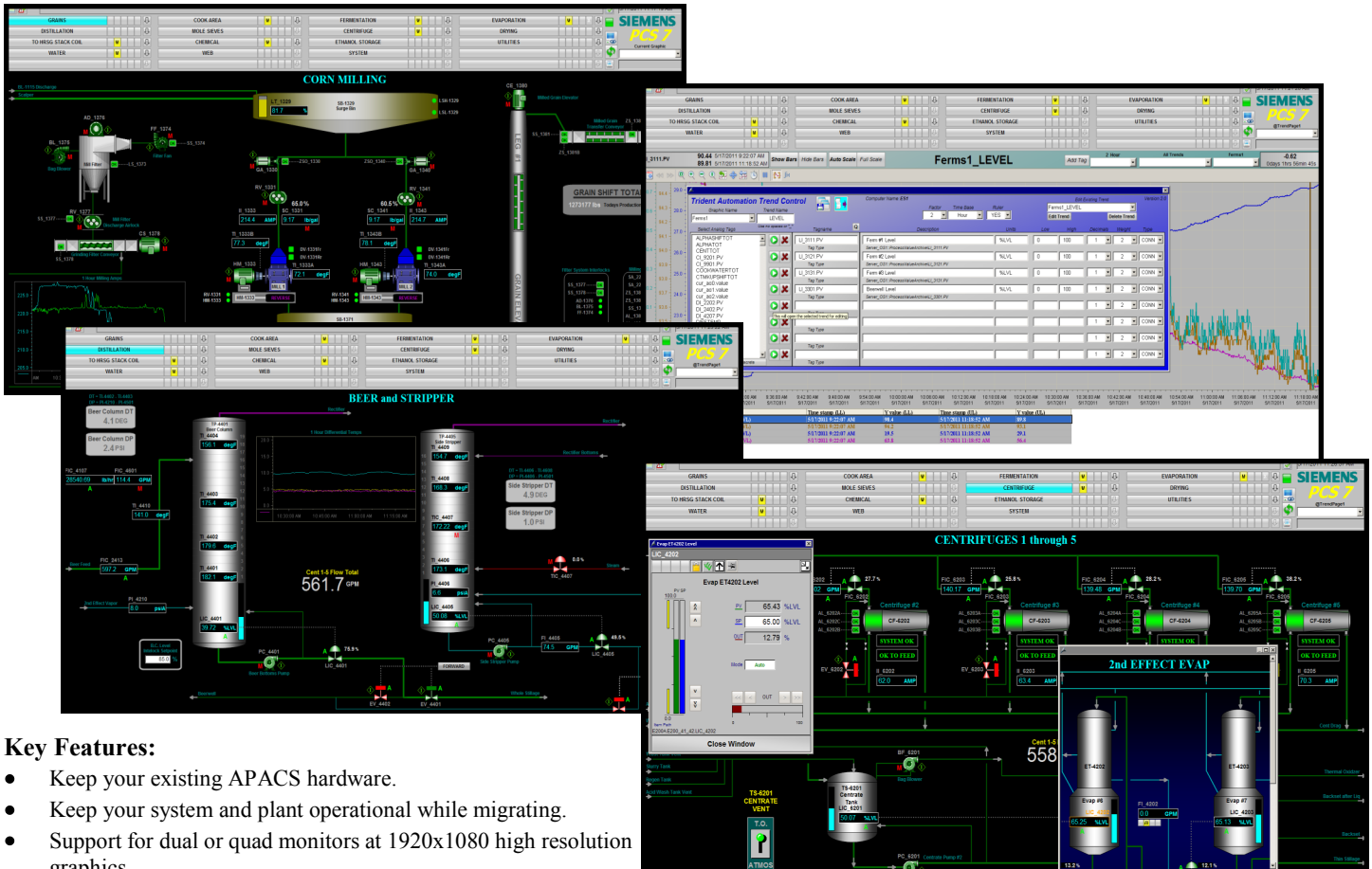


APACS OS

Expensive control system replacements are often required not because the control hardware is failing, but because the computers it uses for the operator interface are no longer available. APACS OS offers another migration option for your Siemens APACS hardware with the latest Siemens HMI software.

Siemens' APACS OS incorporates a modular design for use in any area of a plant. APACS OS can perform the functions of distributed control and/or programmable logic control for both continuous and batch control. The APACS system's hardware and software interface with real time process inputs to provide regulated outputs to process controls. The completed control system consists of three major components:

1. The Human Machine Interface (HMI)
2. The APACS system consists of one or more control and I/O modules. All modules are microprocessor based.
3. Field instruments wired to the I/O modules provide the inputs and outputs to the APACS system.

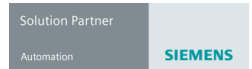


Key Features:

- Keep your existing APACS hardware.
- Keep your system and plant operational while migrating.
- Support for dual or quad monitors at 1920x1080 high resolution graphics.
- Enhanced alarm management.
- Enhanced diagnostics and update control.
- Integrates information from the plant, lab and management for use by any plant personnel.
- New APACS OS symbols and trend interface created by Trident.
- Access via web browser through Siemens Data Monitor, Excel reports, Process Graphics and Custom Trends.

Benefits:

- Replace the mature software in your control system with the latest technology.
- Minimize operator re-training.
- Integrate data from multiple control systems and lab instruments.
- Allow focused access to plant and lab data outside the control room.
- Complete the migration without affecting plant operations.



APACS & APACS OS are trademarks of Siemens Industry.

Contact Trident Automation at (920) 759-7477 or via email to info@tridentautomation.com to schedule a webinar demonstration **TODAY!**